

a·w·a·h

oasis de mar

An aerial photograph of a coastline. The left side of the image shows the ocean with dark, textured waves. The right side shows a wide, sandy beach. A line of white surf separates the water from the sand. The text "A NEW FUTURE" is centered over the image, spanning across the water and the surf line.

A NEW FUTURE

BY THE SEA



OASIS

I am a natural source. I am the Earth's
oceans and seas.

With me, you'll find purity, tranquility, and a
life that travels the world with complete
freedom.

Soon, I will reach the shore where you and I
will meet. And you'll be able to carry a few
drops of me into your own life and start
flowing again... like seawater.



WELCOME TO A SEASIDE ESCAPE

They say that sandy paths connect to what the soul dreams of

In this way, we've found a place in Yucatán that holds the vibrant essence of every summer, witnessing sunsets and planned activities for living in a community. A space that brings together the purity of the sea and the lagoon in one place.



NEW SEA EXPERIENCES

Your destination is in a space with great amenities, top-notch services, and all the benefits of a planned location by the beach.



TERRACE & POOL

Images are for illustrative purposes and are subject to changes or possible modifications in common areas. Promoters reserve the right to make changes of equivalent quality without prior notice. This advertisement is regulated by NOM 247-SE-2021.



Images are for illustrative purposes and are subject to changes or possible modifications in common areas. Promoters reserve the right to make changes of equivalent quality without prior notice. This advertisement is regulated by NOM 247-SE-2021.

DISCOVER YOURSELF IN A UNIQUE PLACE

A development with a summer essence that recreates, with impeccable architecture, the harmonious union of a community, beach, and tropical vegetation.

Comprising 189 apartments, A.W.A.H is a project divided into clusters that adapt to the region's endemic vegetation, designed to enjoy a resort lifestyle every day.

Each space conveys the exclusive security and tranquility for residents, offering activities, services, and amenities that collectively enhance the beachfront living experience.

Explore the comforts without leaving A.W.A.H, experience the service that makes this development your dream place, perfected.

Live the versatility and become part of a different community where you can view your new apartment as an investment with unparalleled benefits and the natural beauty for your life.



A DEVELOPMENT WITH AN

UNBEATABLE LOCATION



CHICXULUB, YUCATÁN

The development is located at Km 11.5 on the Progreso-Chicxulub road, just a few meters from the coastal commercial area.





Chicxulub Puerto

Puerto Progreso

Cenote Pájaros

a.w.a.h
oasis de mar

Carretera Conkal - Chicxulub Puerto

Autódromo Yucatán

Tamanché

Foro GNP Seguros

Carretera Mérida - Progreso

Country Club

Conkal

Universidad Anahuac

Universidad Marista

La Isla

Hospital Grupo Christus Muguerza

Periférico de Mérida

The Harbor

Gran Plaza

Universidad Modelo

Plaza Galerías

Altrabrisa

Campus UADY

Siglo XXI

Centro Histórico

Aeropuerto Int. Mérida



POINTS OF INTEREST

Located at Km 11.5 on the Progreso-Chicxulub road, with close proximity to strategic points



Churches & Temples



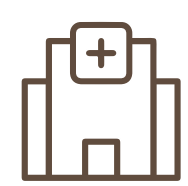
Shopping Centers



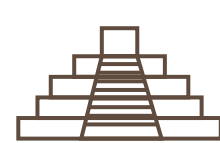
Restaurants & Cafes



Historical Center



Clinics & Hospitals



Archaeological Sites



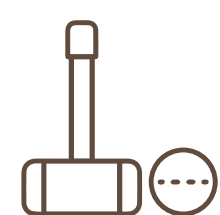
Merida Airport



Schools & Colleges



Bars & Nightclubs



Polo Club



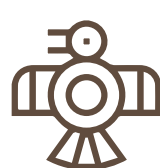
GNP Forum



Supermarkets



Kayak Rides



Museum of the Mayan World



Lagoons & Cenotes



Historical Museums

FIND THE BALANCE BETWEEN
PROFITABILITY AND A LIFE BY THE SEA



A NEW CONCEPT BY THE SEASIDE

Delve deeply into each of the spaces that surround your next lifestyle.

A.W.A.H Sea Oasis connects all its residents through a unique environment facing the sea, surrounded by apartments with top-notch details and great amenities that make this project an investment with limitless benefits.

EVERYTHING YOU'RE LOOKING FOR IS HERE

BEACHFRONT APARTMENTS

Explore our apartment styles and find the one that suits you perfectly.



Images are for illustrative purposes and are subject to changes or possible modifications in common areas. Promoters reserve the right to make changes of equivalent quality without prior notice. This advertisement is regulated by NOM 247-SE-2021.

LIVING ROOM

LIVE SURROUNDED BY

INCREDIBLE AMENITIES



BEACH CLUB

WITH ROOFTOP BY THE SEA

A private club by the sea designed for residents' comfort and interaction.



PADDLE TENNIS COURT

WITH 2 PADDLE TENNIS COURTS

The perfect setting for practicing this sport and enjoying a balanced life.

POOLS

WITH 5 INCREDIBLE POOLS

Designed to resemble the shape of rivers or bodies of water where the sun's rays and magic come to life.



GRILL AREA

OUTDOOR

Enjoy an evening with your friends in our outdoor grill area.

KIDS CLUB

FUN & SAFETY

The area designed for the little ones where they can play and have fun safely at all times.



OPEN GYM | CALISTHENICS

OUTDOOR EXERCISE

Two spaces with a sea view that aim to inspire and strengthen physical activity from on high.



SUNBATHING AREAS

RESTING AREA

Experiencing maximum fulfillment is possible throughout the development, thanks to the presence of a set of hammocks and sun loungers.



SOCIAL TERRACES

GATHERING SPACES

Spend your afternoons in the best way with the best company on our outdoor terraces.



GARDEN & CONSERVATION

GREEN AREAS IN THE PROJECT

Witness the surrounding nature, a combination of areas with great conservation and green spaces.



CONTROLLED ACCESS

PARKING

A space that manages the flow of cars, protecting the community and maintaining controlled vehicular traffic.

RESORT-STYLE SPACES

Find the perfect corner and enjoy each of A.W.A.H's spaces.



PADDLE TENNIS COURT

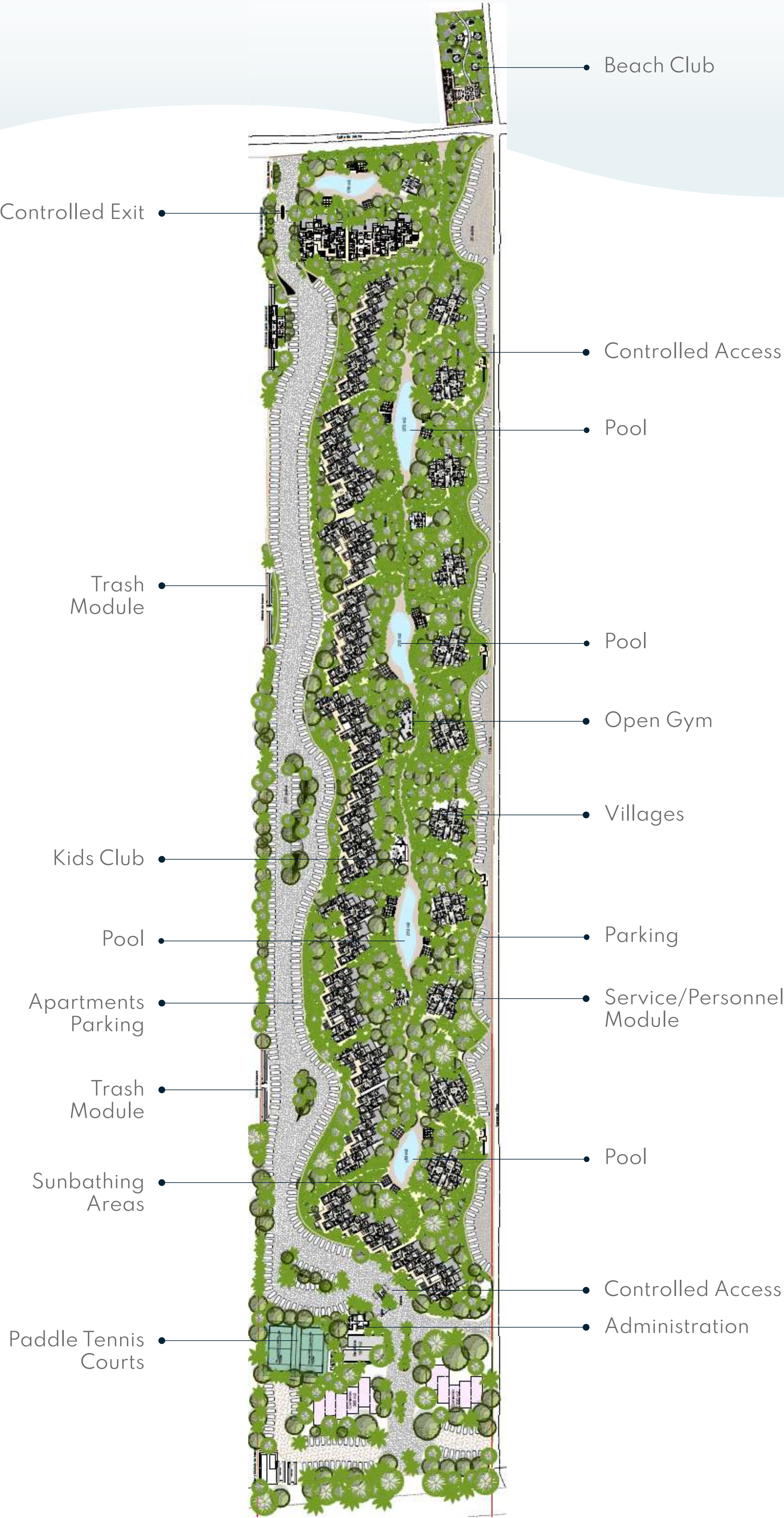
Images are for illustrative purposes and are subject to changes or possible modifications in common areas. Promoters reserve the right to make changes of equivalent quality without prior notice. This advertisement is regulated by NOM 247-SE-2021.

A HIDDEN PARADISE

MASTER PLAN

MASTER PLAN

A development consisting of 189 apartments



THE INFORMATION IS SUBJECT TO CHANGE AND POSSIBLE MODIFICATIONS IN PRIVATE AREAS.



Images are for illustrative purposes and are subject to changes or possible modifications in common areas. Promoters reserve the right to make changes of equivalent quality without prior notice. This advertisement is regulated by NOM 247-SE-2021.

APARTMENTS WITH INCLUDED SERVICES

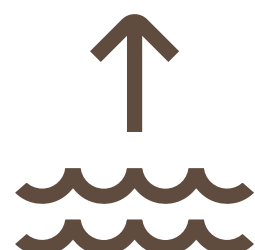
The entire development offers top-notch services and maintenance, allowing you to live in a pleasant environment



Lighting



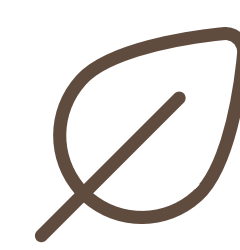
Electricity



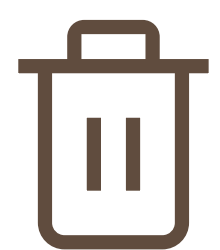
Wastewater
Treatment



Water
Supply



Irrigation
System



Garbage
Storage

THE INFORMATION IS SUBJECT TO CHANGE AND POSSIBLE MODIFICATIONS IN PRIVATE AREAS.



EXPLORE OUR

TYPOLOGIES

APARTMENT 1

Live by the sea with great amenities

DPB1

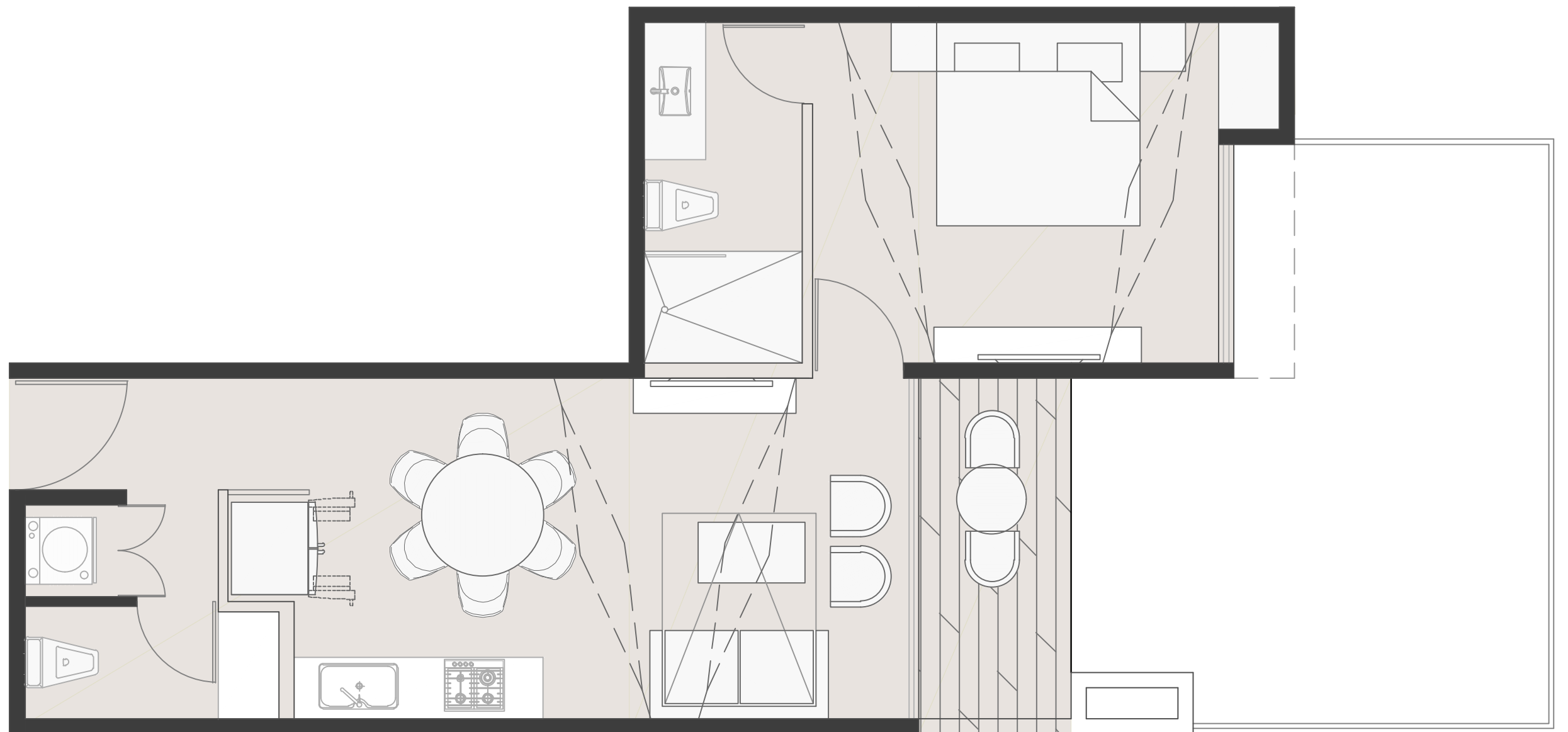
GROUND FLOOR

1 BEDROOM

- Interiors 54 m²
- Covered Terrace 6 m²
- Garden 21/22 m²
- Overhangs 1 m²
- Total Surface 82/83 m²

1 Bedroom
Kitchen
Living and Dining Area
Laundry Area

Terrace
Closet
1 1/2 Bathrooms
Garden



DPN1

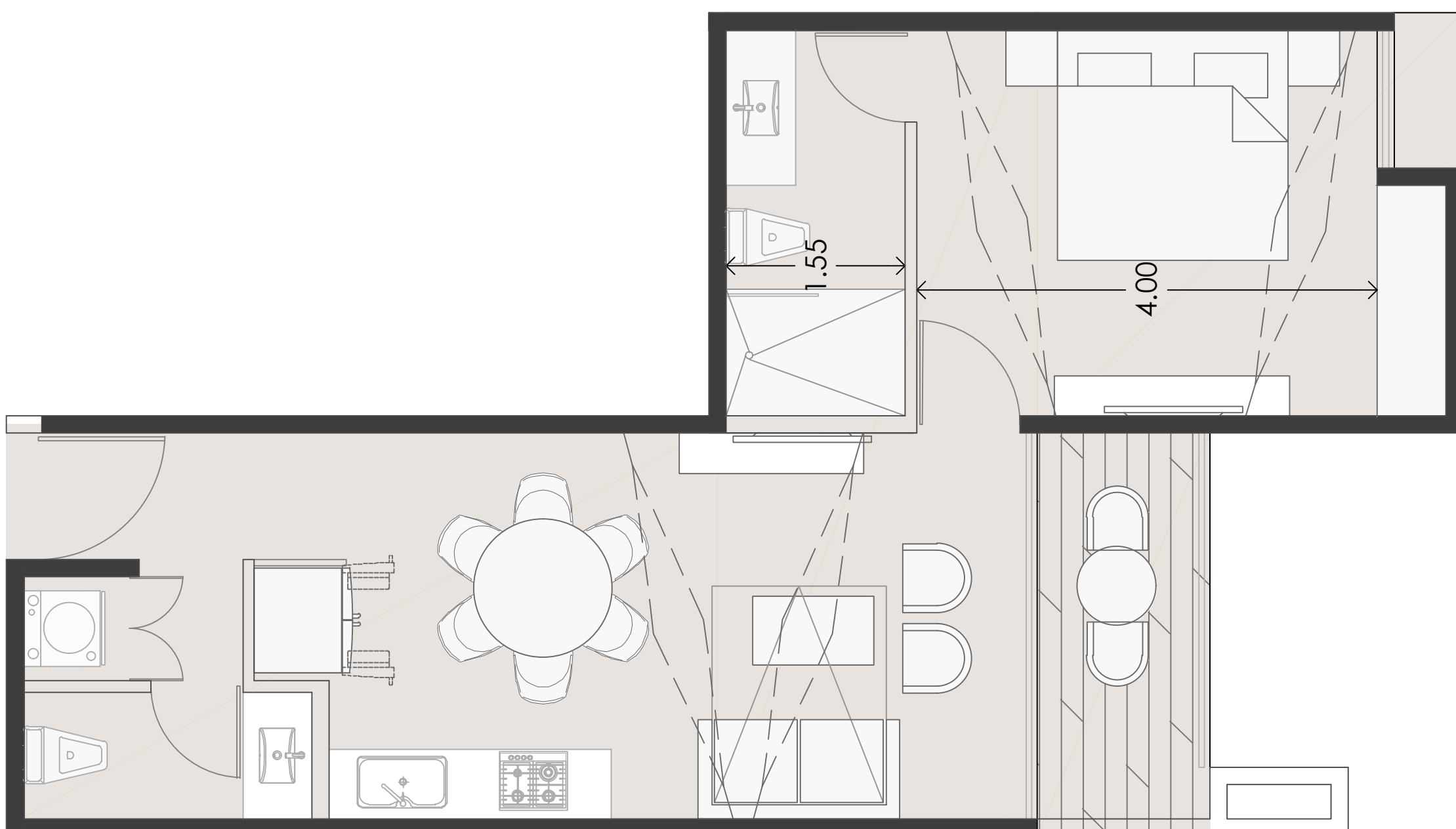
FIRST LEVEL

1 BEDROOM

- Interiors 54/55 m²
- Covered Terrace 6 m²
- Total Surface 60/61 m²

1 Bedroom
Kitchen
Living and Dining Area
Laundry Area

Terrace
Closet
1 1/2 Bathrooms



DSN2

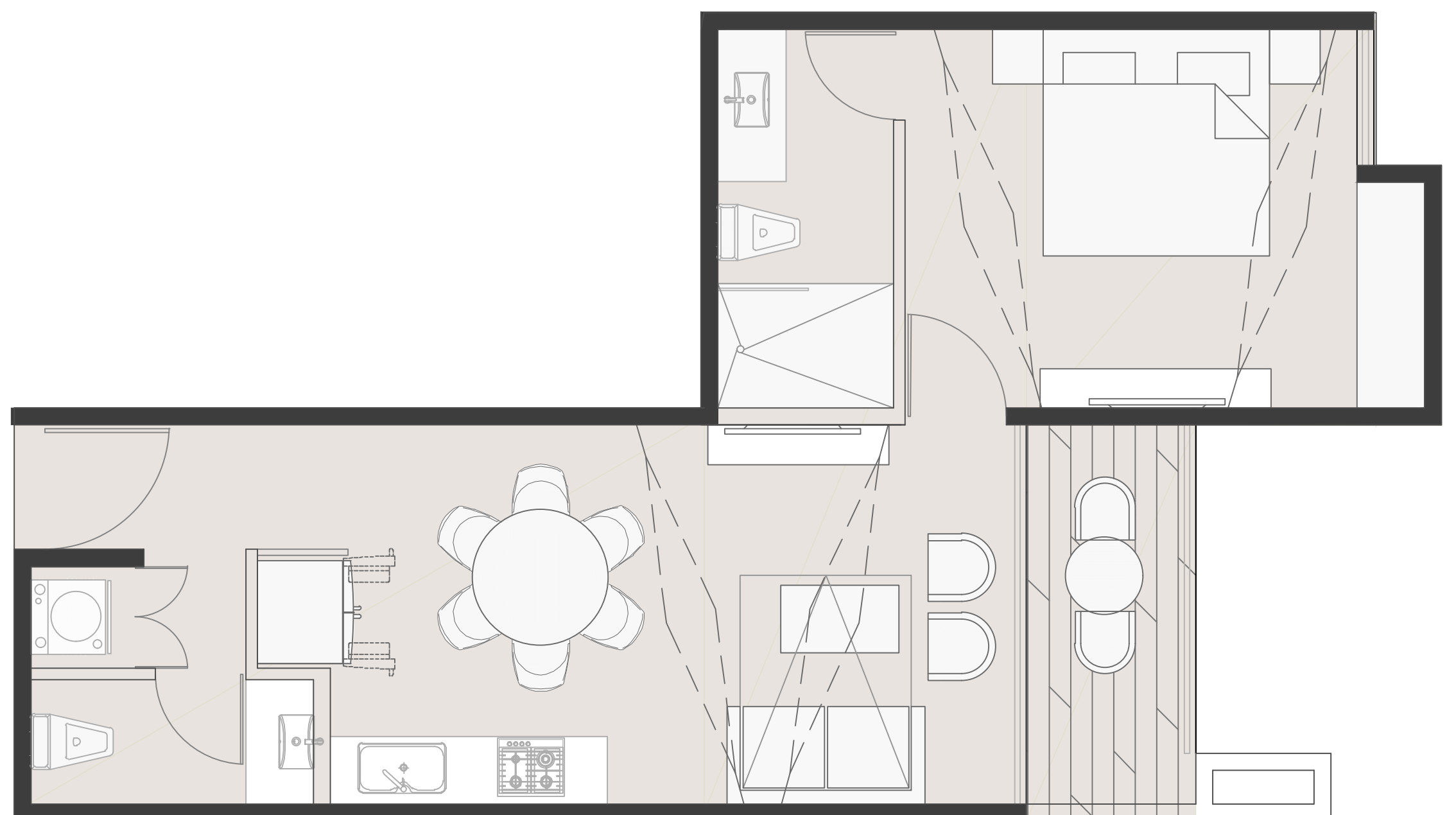
SECOND LEVEL

1 BEDROOM

- Interiors 54/55 m²
- Covered Terrace 6 m²
- Roof Top 15 m²
- Total Surface 75/76 m²

1 Bedroom
Kitchen
Living and Dining Area
Laundry Area

Terrace
Closet
1 1/2 Bathroom



APARTMENT 2

Find the apartment that best suits your needs.

DPB2

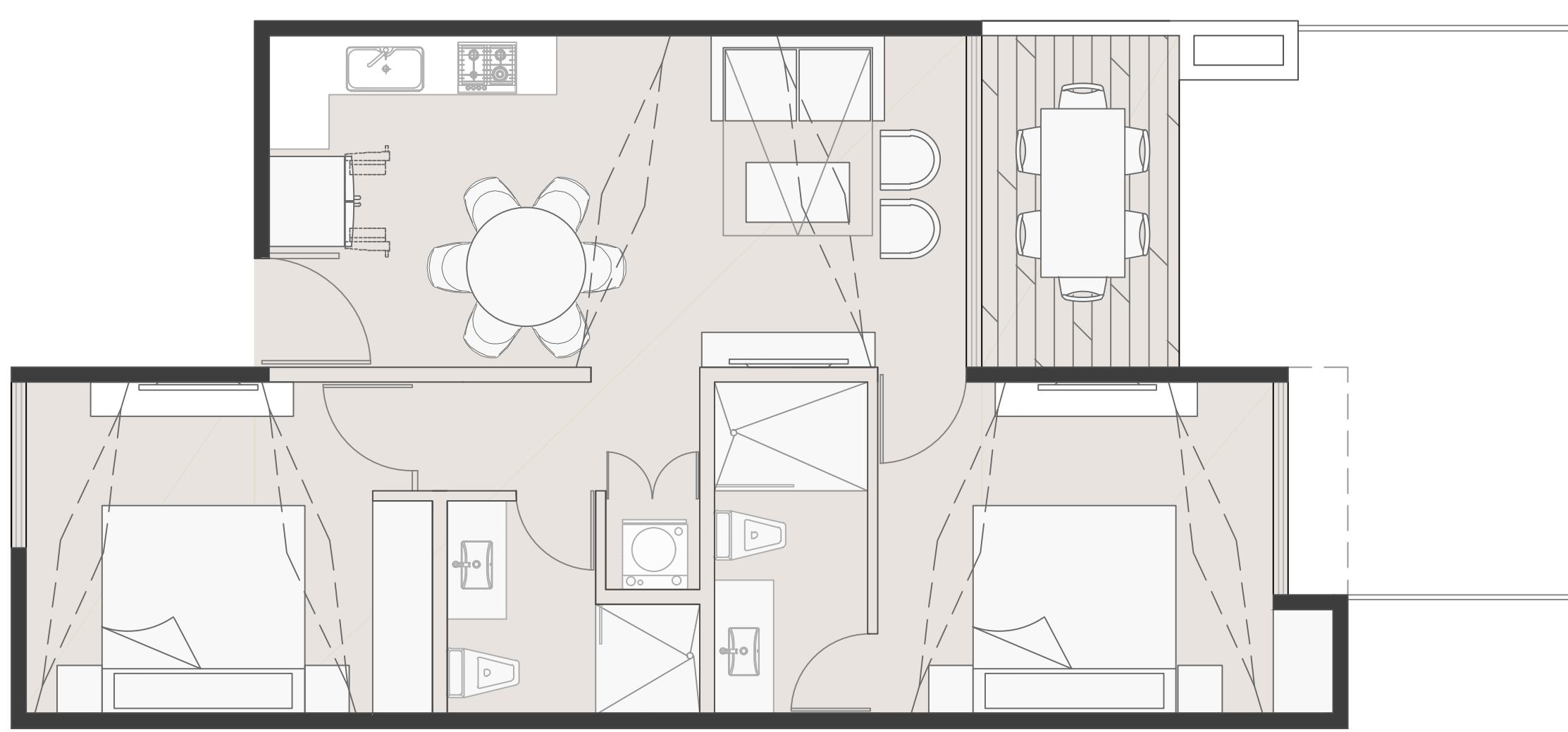
GROUND FLOOR

2 BEDROOMS

- Interiors 72/73 m²
- Covered Terrace 7 m²
- Garden 19 m²
- Overhangs 1 m²
- Total Surface 99/100 m²

2 Bedrooms
2 Bathrooms
Kitchen
Living | Dining Area

Terrace
Closet
Laundry Area
Garden



DPN2

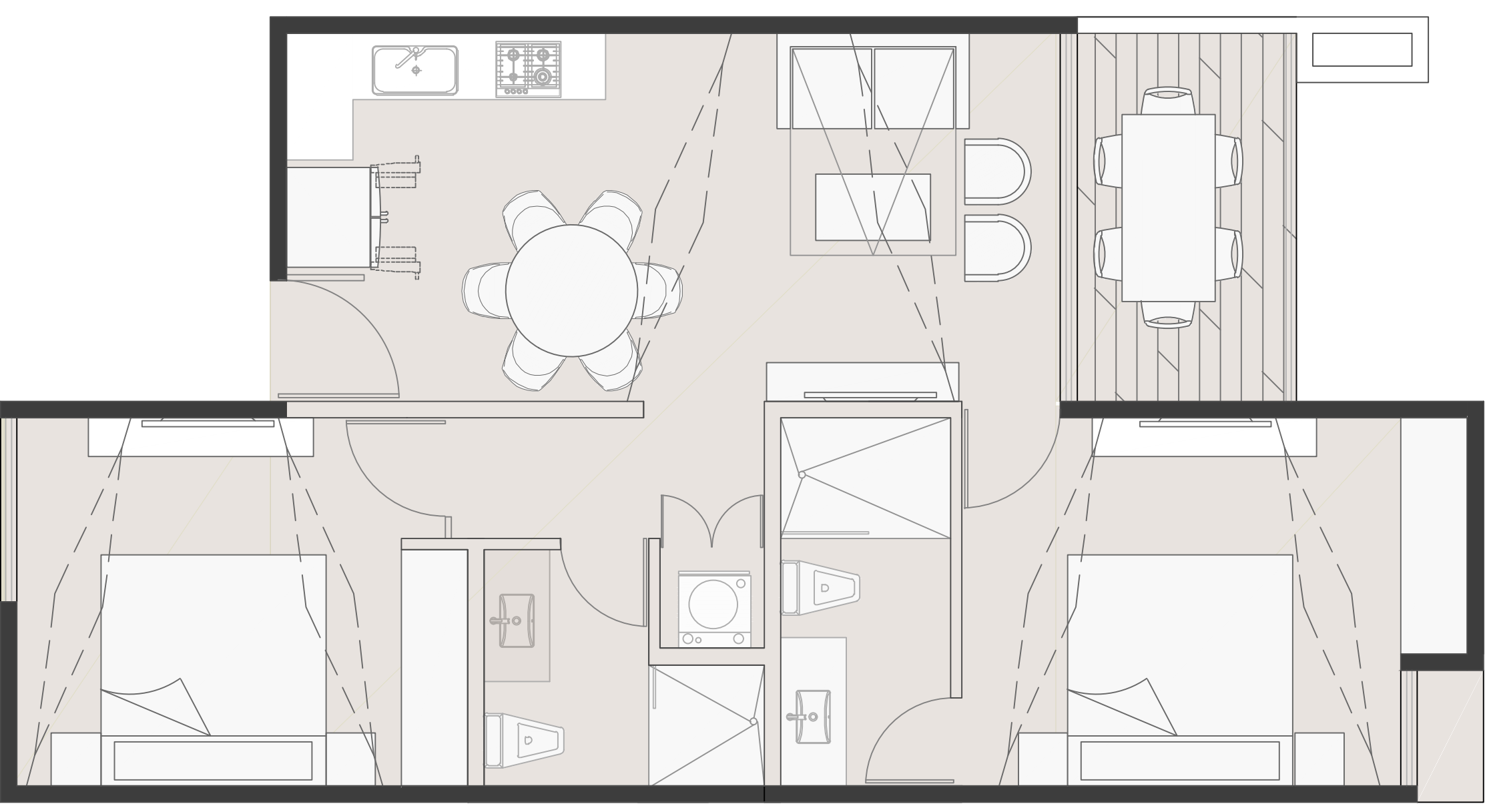
FIRST LEVEL

2 BEDROOMS

- Interiors 72/73/74 m²
- Covered Terrace 7 m²
- Total Surface 79/80/81 m²

2 Bedrooms
2 Bathrooms
Kitchen
Living | Dining Area

Terrace
Closet
Laundry Area



DSN2

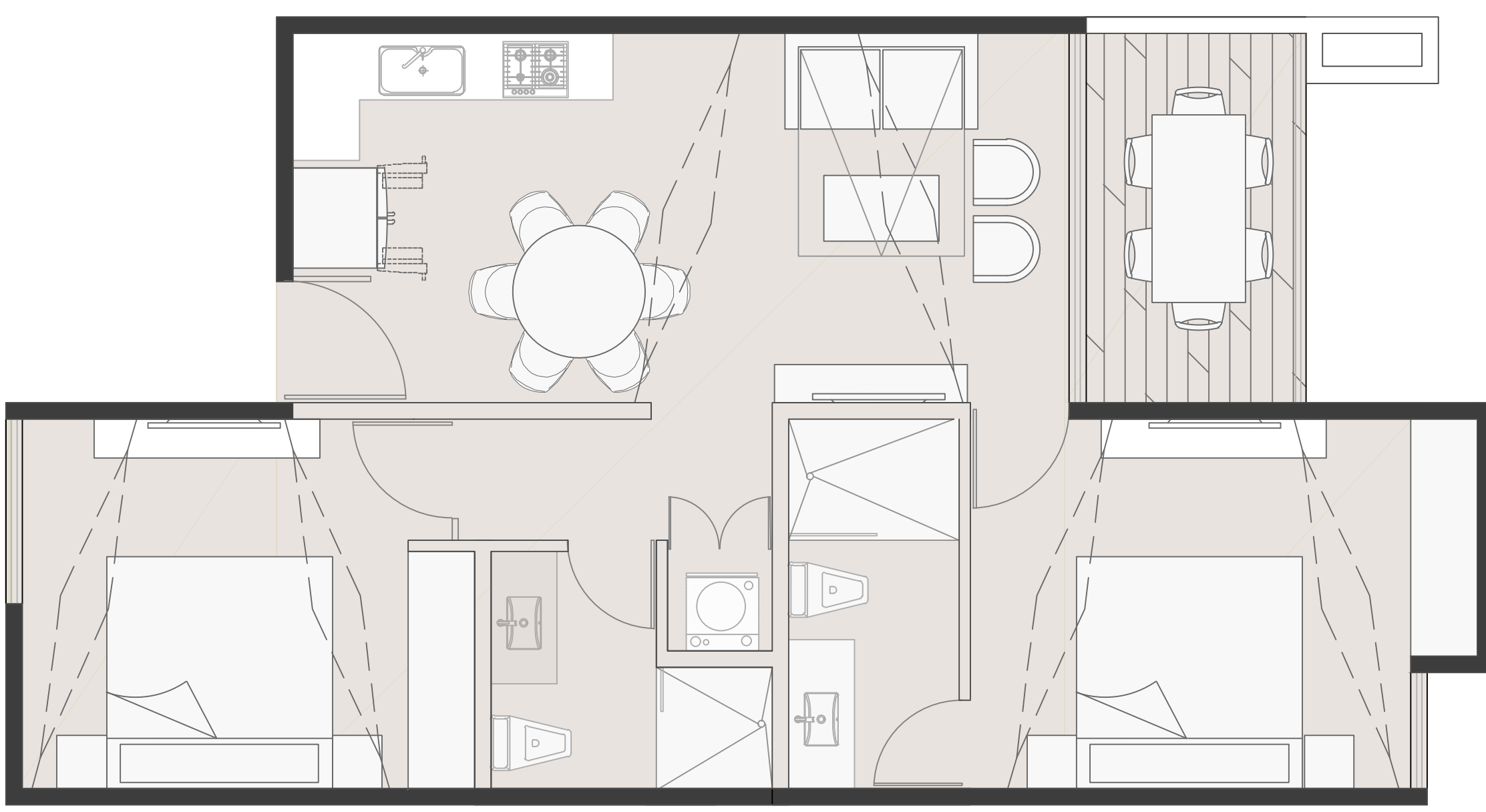
SECOND LEVEL

2 BEDROOMS

- Interiors 72/73/74 m²
- Covered Terrace 7 m²
- Roof Top 20 m²
- Total Surface 99/100/101 m²

2 Bedrooms
2 Bathrooms
Kitchen
Living | Dining Area

Terrace
Closet
Laundry Area



APARTMENT 3

Designs tailored for a beachside lifestyle

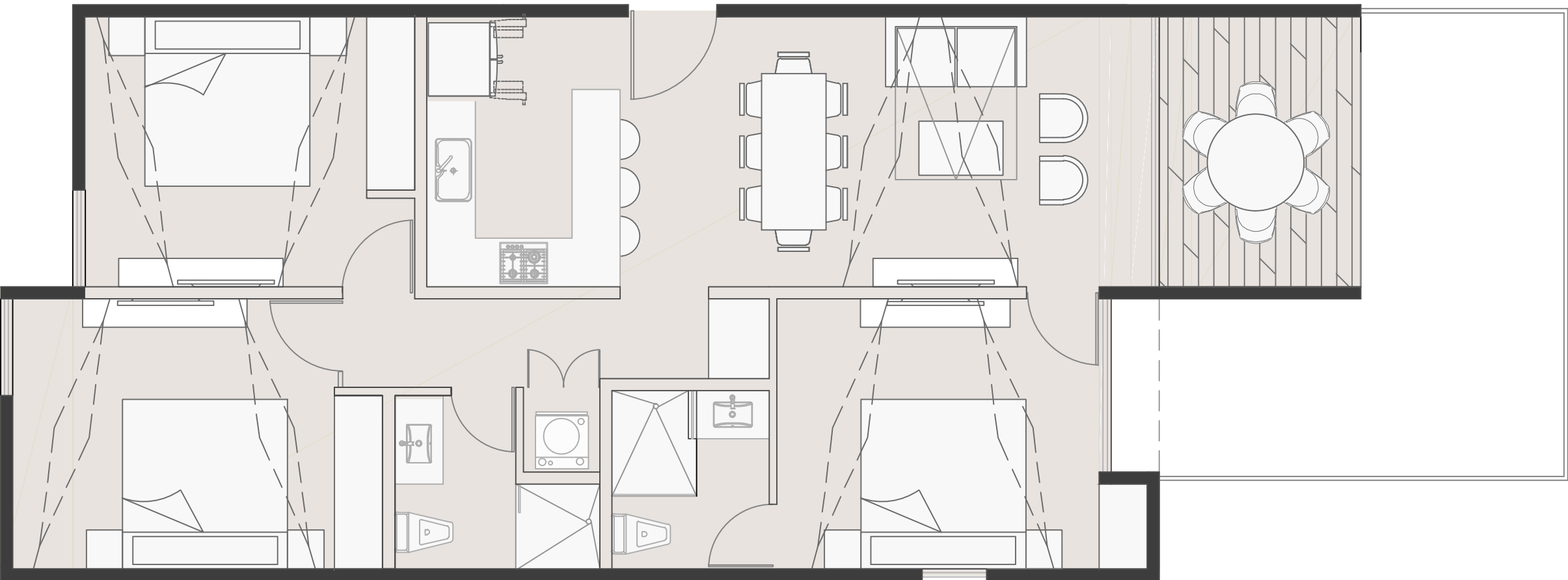
DPB3

GROUND FLOOR

3 BEDROOMS

- Interiors 96/97 m²
- Covered Terrace 9 m²
- Garden 21 m²
- Overhangs 1 m²
- Total Surface 127/128 m²

3 Bedrooms
2 Bathrooms
Kitchen
Living | Dining Area
Terrace
4 Closets
Laundry Area
Garden



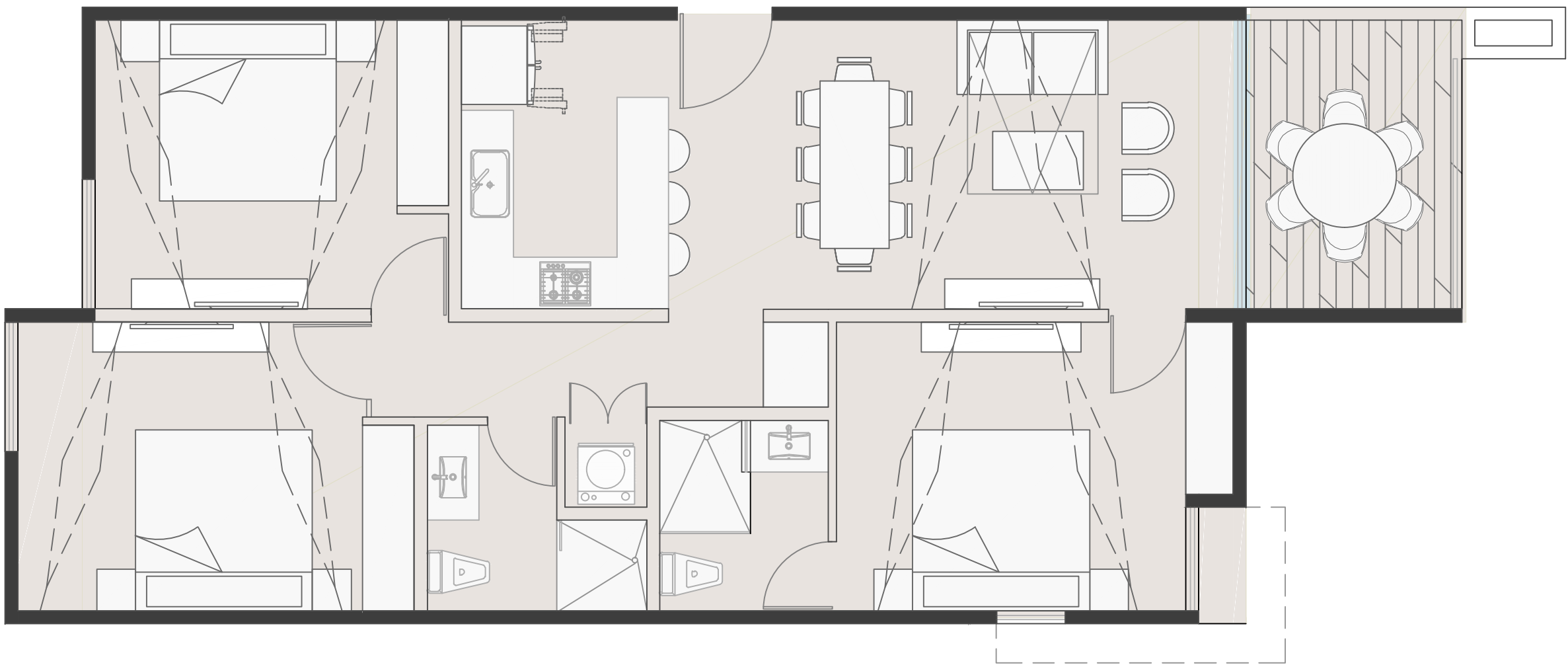
DPN3

FIRST FLOOR

3 BEDROOMS

- Interiors 97 m²
- Covered Terrace 9 m²
- Total Surface 106 m²

3 Bedrooms
2 Bathrooms
Kitchen
Living | Dining Area
Terrace
4 Closets
Laundry Area



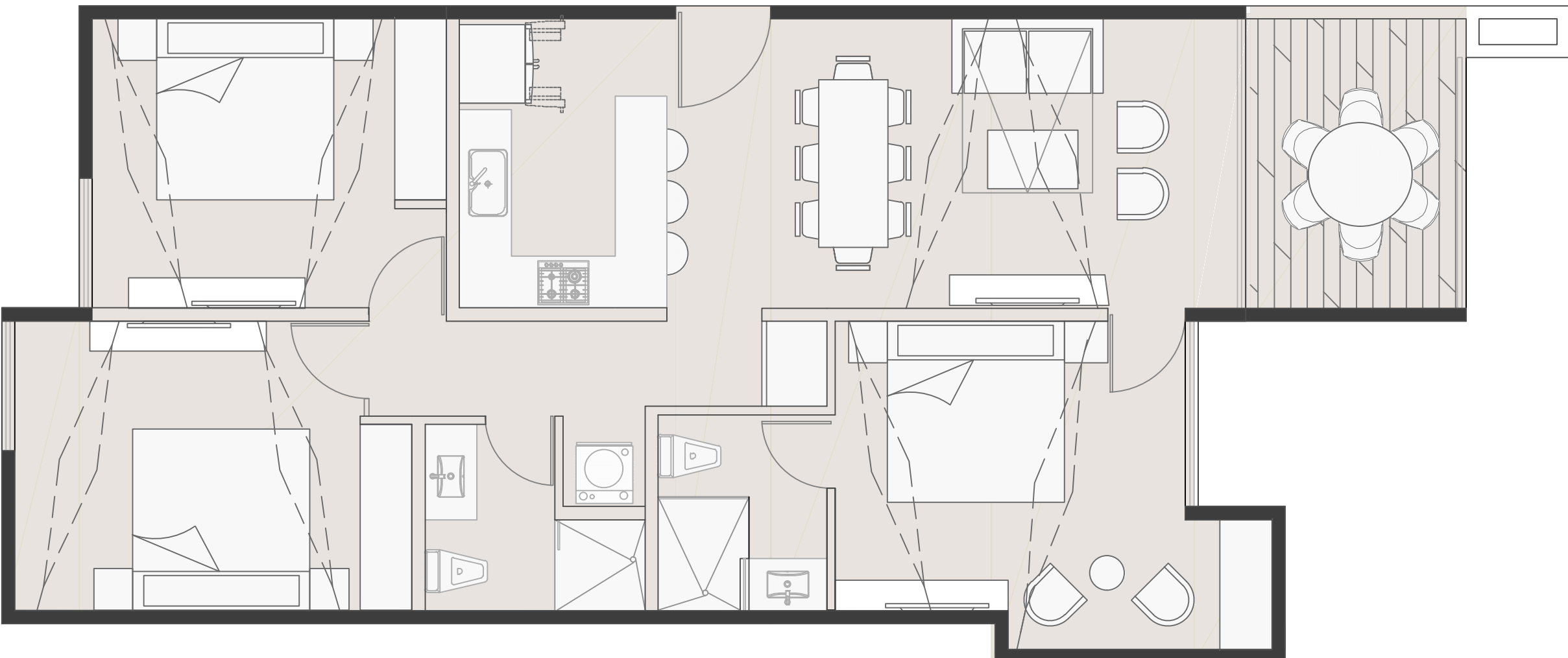
DSN3

SECOND LEVEL

3 BEDROOMS

- Interiors 97/98 m²
- Covered Terrace 9 m²
- Roof Top 35 m²
- Total Surface 141/142 m²

3 Bedrooms
2 Bathrooms
Kitchen
Living | Dining Area
Terrace
4 Closets
Laundry Area



A PARADISE AWAITS YOU

A.W.A.H. offers a wide range of residential products, each designed for a dreamlike experience



BALCONY

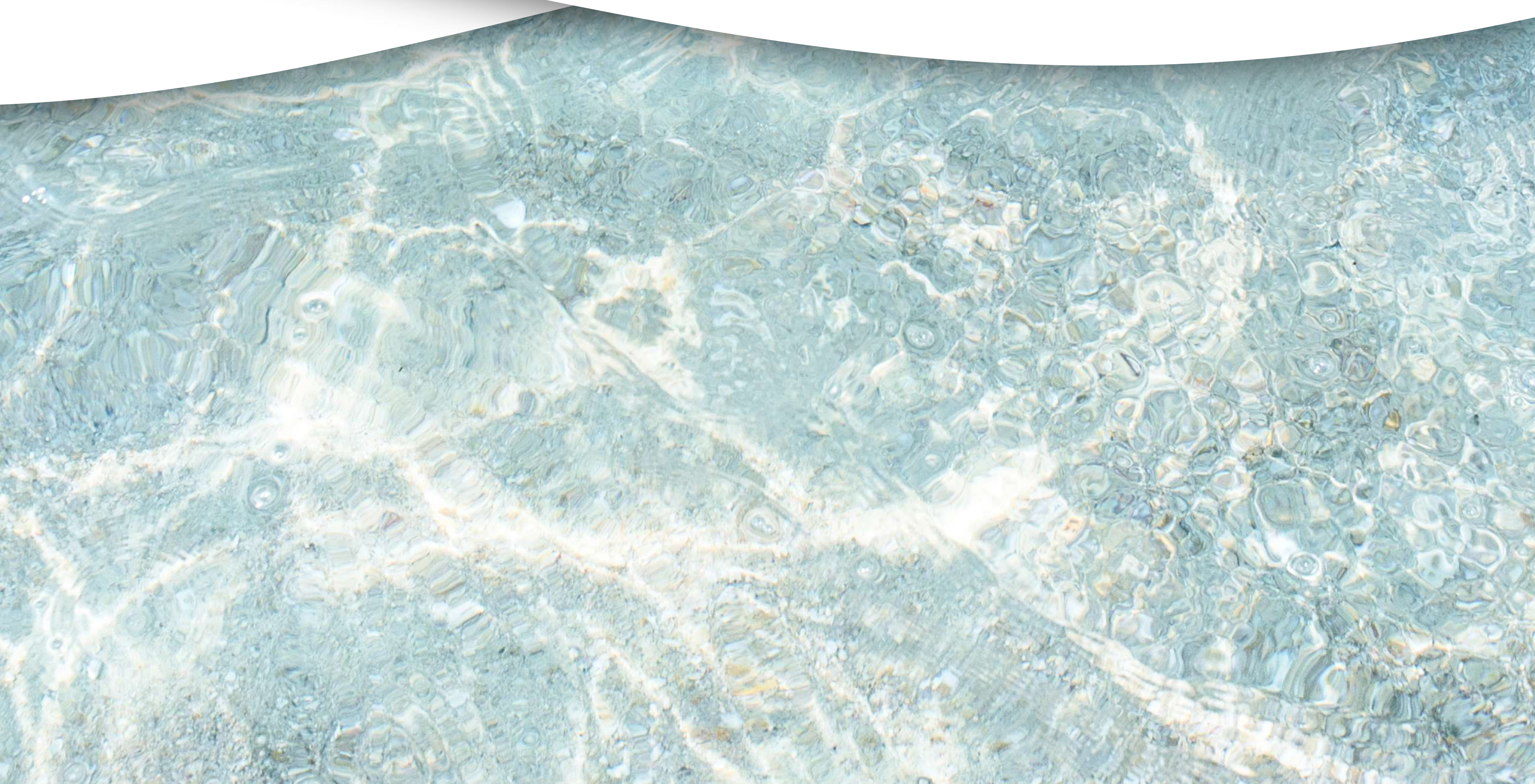
Images are for illustrative purposes and subject to changes or possible modifications in common areas. Promoters reserve the right to make changes of equivalent quality without prior notice. This advertisement is regulated by NOM 247-SE-2021.



WHERE THE MAGIC OF SUMMER NEVER ENDS

A.W.A.H. is composed of drops of freshwater and saltwater that awaken the true sense of a tropical life.

Find the perfect space for your life by the sea and discover the possibility of making your apartment the ideal place to share with family.



INCREDIBLE BEACH CLUB IN FRONT OF THE SEA

Find the perfect paradise while spending your evenings in a spacious area with a sensational view of the Yucatán sea.

BEACH CLUB

Images are for illustrative purposes and subject to changes or possible modifications in common areas. Promoters reserve the right to make changes of equivalent quality without prior notice. This advertisement is regulated by NOM 247-SE-2021.



UNPARALLELED DETAILS

Apartments with finishes and details that stand out on their own

A LIFESTYLE INSPIRED BY THE SEA

Let the sound of the waves and the beach breeze
be part of your days

TOP VIEW

Images are for illustrative purposes and subject to changes or possible modifications in common areas. Promoters reserve the right to make changes of equivalent quality without prior notice. This advertisement is regulated by NOM 247-SE-2021.

FIND YOUR DESTINATION AT A.W.A.H

A development consisting of apartments by the sea, incredible amenities for the whole family, and a privileged location on the Yucatán coast

This and more make A.W.A.H. Oasis by the sea, the perfect place to enjoy life by the sea with the best company.

THE BEACH IS WAITING FOR YOU

DIVERSE MODELS

At A.W.A.H Oasis by the sea, you'll find a range of apartment styles that will suit all your needs



KITCHEN AND DINING ROOM

Images are for illustrative purposes and subject to changes or possible modifications in common areas. Promoters reserve the right to make changes of equivalent quality without prior notice. This advertisement is regulated by NOM 247-SE-2021.

DIKAP

DESARROLLOS

Our projects have been a reference and have contributed to various cities in the southeast of Mexico and the Caribbean, enriching the landscape, urban development, and environmental sustainability.


We have offered great investment alternatives for our clients, guests, and investors who believe in the mission of a large human and financial capital that generates quality of life. Developments for living well.

DEVELOPMENTS FOR LIVING WELL



MAHANYÉ

BETWEEN SEA AND LAND



NAVELA



TAMANKAYA

Jardín Infinito.



ōnne



V | I | U

COUNTRY



Club

ENTRESELVAS

AN ECO-CENTRIC COMMUNITY



EXPLORE AND VISIT

OUR SHOWROOM



SCHEDULE YOUR APPOINTMENT WITH AND ADVISOR

Get to know every detail of our projects; schedule your appointment with one of our advisors or visit our showroom.

CONTACT

Tel. 999 913 5704 | WhatsApp. 999 156 0548
info@dikap.mx

SHOWROOM

Calle 14 No. 201 entre 61 y 63
Col. Montes de Amé, Plaza San Angelo

CONTACT US AND DISCOVER THE BEST OF DIKAP DEVELOPMENTS.



a·w·a·h

oasis de mar

The information listed above is subject to change and possible modifications in private areas, as well as common and recreational areas.

Promoters reserve the right to make changes and/or substitutions of equivalent quality for these specifications for the benefit of the project when they deem it appropriate at their sole discretion without prior notice.